

FOR LEASE

MEDICAL OFFICE

DENTAL / ORTHODONTIST / PERIODONTIST



**8940 RESEDA BOULEVARD, NORTHRIDGE CA 91324
(SOUTH OF NORDHOFF STREET)**

- SIZE: 1,500 square feet
- RATE: \$1.65 per square foot, plus utilities
- PARKING: Free and common
- FORMER USE: Orthodontist
- COMMENTS: Prime Reseda Boulevard storefront within close proximity to CSUN.



FOR MORE INFORMATION CONTACT:

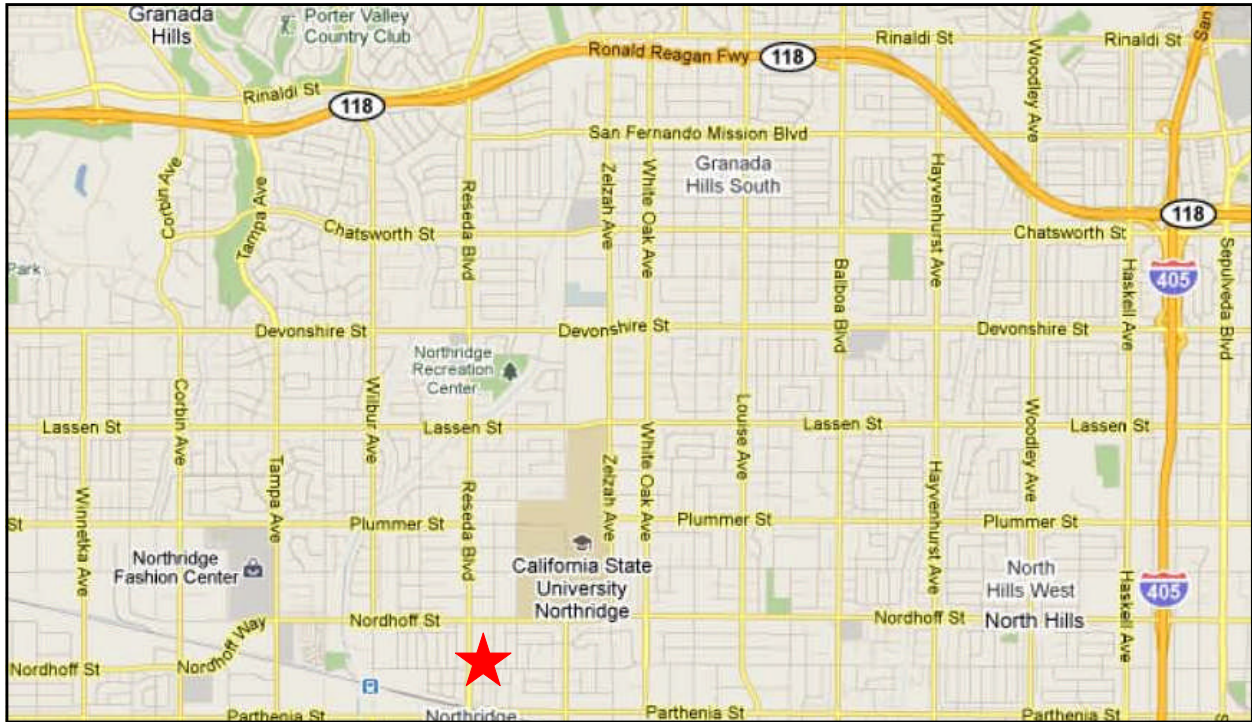
Jon Paley 818-225-1300

Paley
COMMERCIAL REAL ESTATE

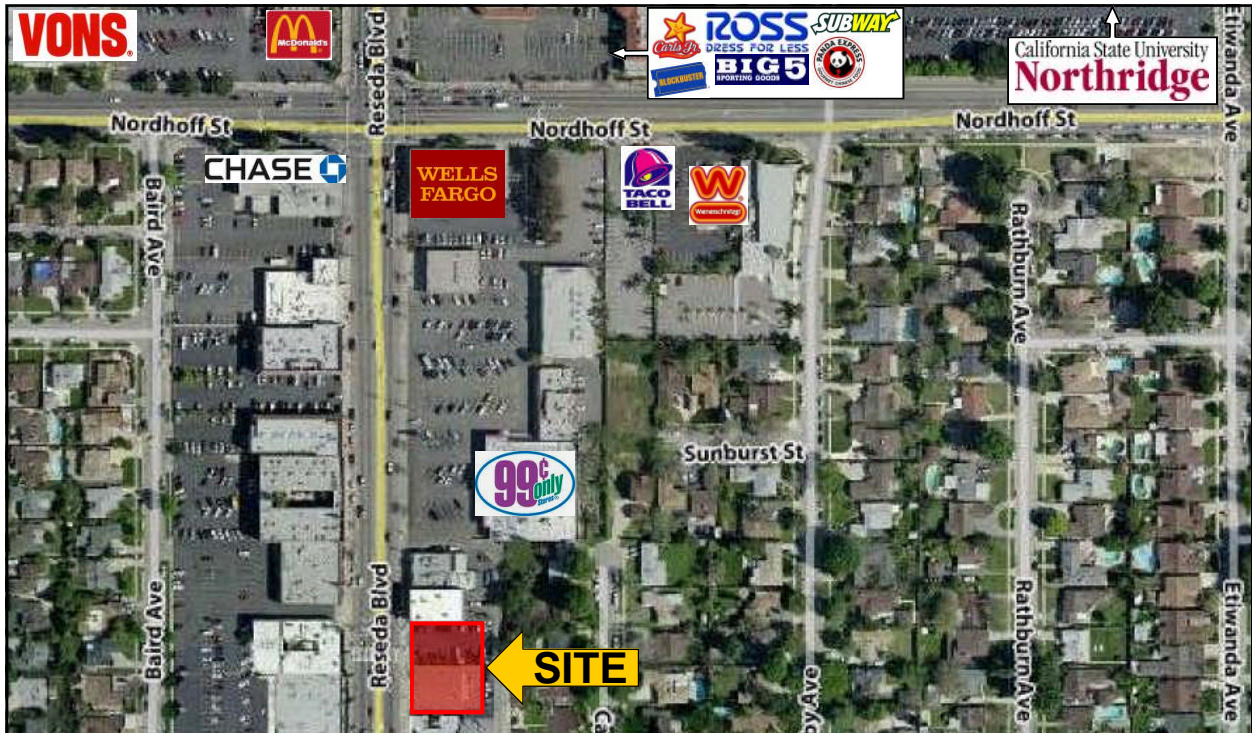
INTERIOR PHOTOS



AREA MAP



AERIAL MAP



22033 CLARENDON STREET WOODLAND HILLS, CA 91367 PHONE: 818.225.1300 FAX: 818.225.0470